



PIT BULL SAFETY COVER®  
**User Instruction  
Manual**

Professional Netting Concepts, L.L.C.  
27952 Country Ln  
Hockley, TX 77447

[www.pncnets.com](http://www.pncnets.com)

*The information contained in this user manual is the exclusive property of Professional Netting Concepts, L.L.C. No part of this publication may be reproduced, distributed, or transmitted in any form or by any means, including photocopying, recording, or other electronic or mechanical methods, without prior written permission from Professional Netting Concepts, L.L.C.*

# Table of Contents

<b>Certification</b>	<b>4</b>
<b>System Cautions</b>	<b>5</b>
<b>Parts &amp; Components</b>	<b>6</b>
<b>Parts List</b>	<b>7</b>
<b>Opening Pit Bull Safety Cover®</b>	<b>10</b>
<b>Closing Pit Bull Safety Cover®</b>	<b>11</b>
<b>Detent Pin - Place &amp; Remove</b>	<b>12</b>
<b>Care &amp; Maintenance</b>	<b>13</b>
<b>Inspection Log</b>	<b>14</b>
<b>Frequently Asked Questions</b>	<b>21</b>
<b>Contact Us</b>	<b>22</b>
<b>Warranty Terms &amp; Conditions</b>	<b>23</b>

## Certification

The purpose of this manual is to ensure the proper use of the Pit Bull Safety Cover®.

Proper use, function and maintenance will keep your cover working for the life expectancy of the system.

Professional Netting Concepts, L.L.C. *highly recommends* the installation of the Pit Bull Safety Cover® be completed by a “certified installer”.

A certified installer is trained and certified by Professional Netting Concepts, L.L.C.

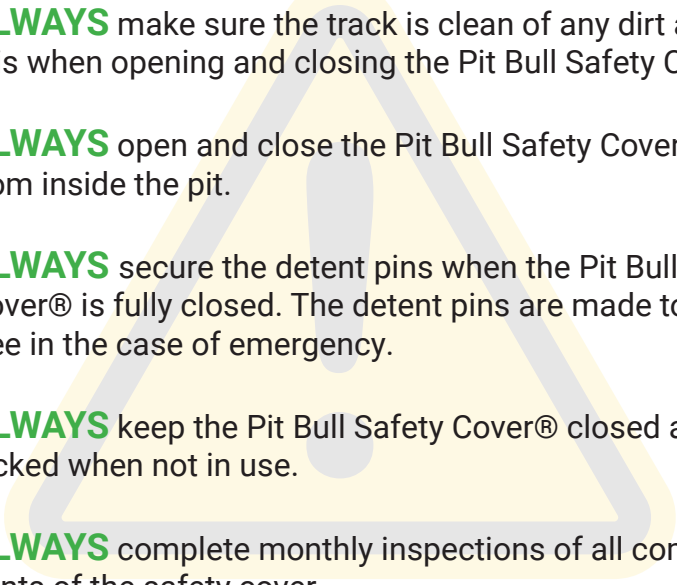
If you are looking for a certified installer, please contact us at [sales@pncnets.com](mailto:sales@pncnets.com)

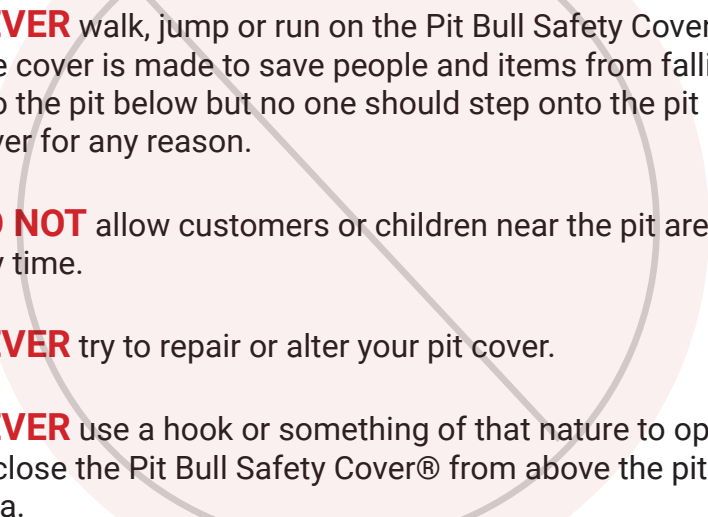
---

Congratulations on your purchase of the Pit Bull Safety Cover®. This manual contains important information on the use and care of your system.

The Pit Bull Safety Cover® was created with ease in mind but safety as a top priority.

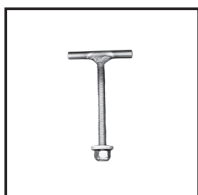
**Please read the following instructions carefully before use.**

- 
- **ALWAYS** make sure the track is clean of any dirt and debris when opening and closing the Pit Bull Safety Cover®
  - **ALWAYS** open and close the Pit Bull Safety Cover® from inside the pit.
  - **ALWAYS** secure the detent pins when the Pit Bull Safety Cover® is fully closed. The detent pins are made to break free in the case of emergency.
  - **ALWAYS** keep the Pit Bull Safety Cover® closed and locked when not in use.
  - **ALWAYS** complete monthly inspections of all components of the safety cover.

- 
- **NEVER** walk, jump or run on the Pit Bull Safety Cover®. The cover is made to save people and items from falling into the pit below but no one should step onto the pit cover for any reason.
  - **DO NOT** allow customers or children near the pit area at any time.
  - **NEVER** try to repair or alter your pit cover.
  - **NEVER** use a hook or something of that nature to open or close the Pit Bull Safety Cover® from above the pit area.

## Pit Bull Safety Cover® Channel Parts & Components

Our goal is to make the end user familiar with the components, function and maintenance of the Pit Bull Safety Cover®. This manual will serve as a guide and reference for the user. The user should read the manual to get acquainted with how the Pit Bull Safety Cover® works. Listed below are the parts/components detail:



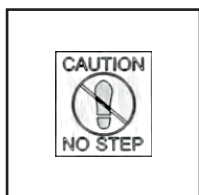
T-Bolt



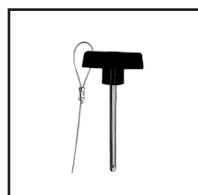
C-Channel



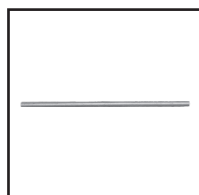
6" Hook & 10"  
Bolt Adapter



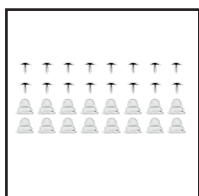
No-Step  
Label



Detent Pin



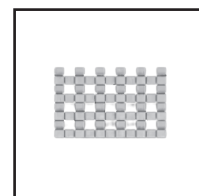
Active/Passive  
Rod (AP)



Pins &  
Backings



Hardware  
Bag

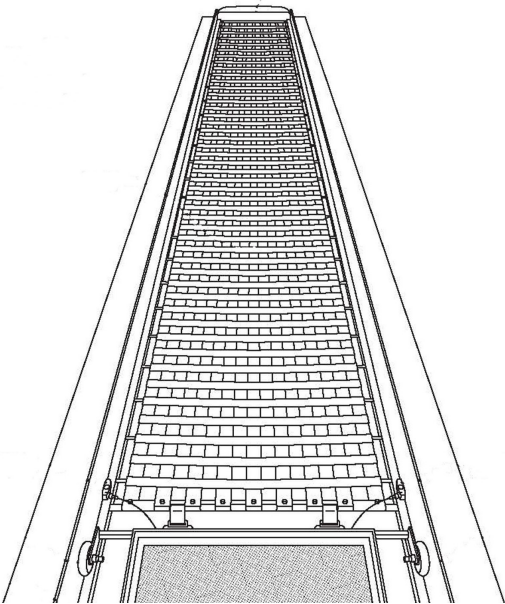


2" Polyester  
Webbing



Scan QR to  
Order  
Replacement  
Parts

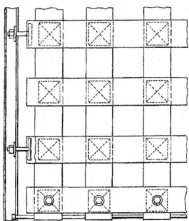
# Pit Bull Safety Cover® Channel System



Install Video

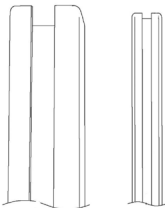


T-Bolt Removal



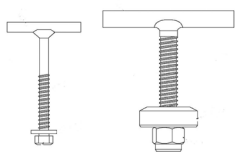
## Pit Bull Safety Cover®

T-Bolts shown (top view) in sliding c-channel and sewn into webbing



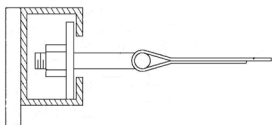
## 11-gauge C-Channel

Channel is what the Pit Bull Safety Cover® glides on to open & close



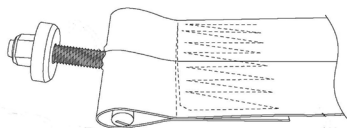
## **T-bolt Assembly**

T-Bolt attaches webbing to sliding C-Channel



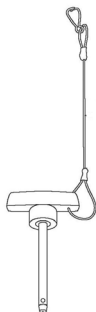
## **T-bolt**

T-Bolt diagram (side view)  
sliding in the C-Channel



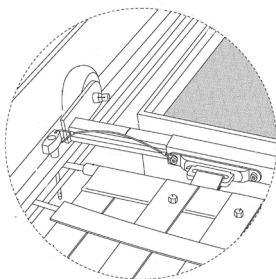
## **T-bolt Webbing Connection**

T-Bolt sewn into webbing  
with a minimum 8 pt. stitch



## **Detent Pin**

Detent pin is used to lock  
Pit Bull Safety Cover® in  
place



## **Detent Pin**

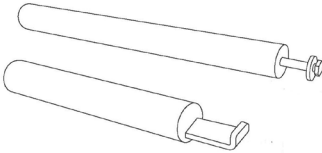
Diagram shows placement  
of detent pin





### Active/Passive (AP) Rod

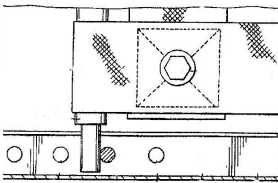
Guide bar on each end. Adapters slide onto ends and into channel.



### Adapters

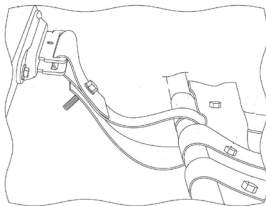
6" Hook and 10" Bolt

Adapters are placed on the ends of the Active/Passive (AP) rods on each end of the safety cover



### Adapter and A/P Rod

Show (top view) position of Detent Pin in c-channel



### Drain Pan Connector

Diagram shows drain pan connection



### No-Step Labels

Pins and Backings for attachment

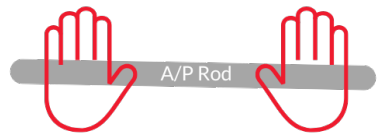
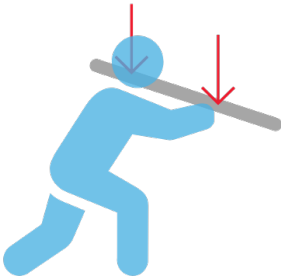
## How to **OPEN** Pit Bull Safety Cover®

The Pit Bull Safety Cover® was designed and constructed to “reduce” or minimize injuries sustained during normal use when installed correctly.

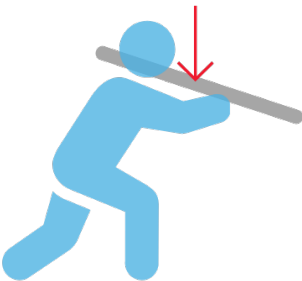


Open hand(s)

1. Locate **Active/Passive Rod** at either end of pit cover and push with two hands evenly apart while walking forward so t-bolts slide in unison with c-channel, opening the pit cover



2. Push MIDDLE of **Active/Passive Rod** at either end of pit cover with one hand while walking forward so t-bolts slide in unison with c-channel, opening the pit cover



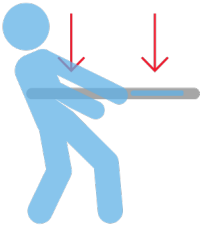
## How to **CLOSE** Pit Bull Safety Cover®

The Pit Bull Safety Cover® should always be closed with the detent pin engaged unless working in the pit area.

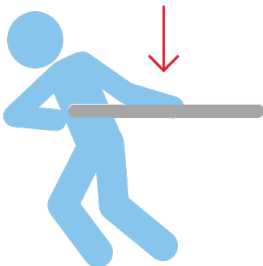


Closed hand(s)

1. Locate **Active/Passive Rod** at either end of pit cover and *pull with two hands evenly apart* while walking backward so t-bolts slide in unison with c-channel, closing the pit cover

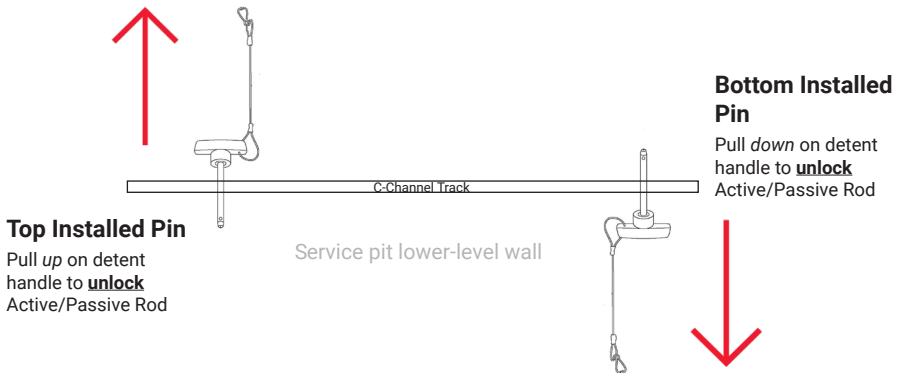


2. *Pull MIDDLE* of **Active/Passive Rod** at either end of pit cover with *one hand* while walking backward so t-bolts slide in unison with c-channel, closing the pit cover



## Detent Pin - Place & Remove

- ALWAYS secure the detent pins when the Pit Bull Safety Cover® is fully closed
- ALWAYS keep the Pit Bull Safety Cover® closed and locked when not in use
- The detent pins are made to break free in the case of emergency



---

### Don't FORGET!

Always keep foot traffic to a minimum around pit area, while safety cover is open.

Your Pit Bull Safety Cover® should glide effortlessly from one end of the pit area to the other and never sag more than a ½" from center of net.

## **Pit Bull Safety Cover® Care & Maintenance**

It is not necessary to remove your Pit Bull Safety Cover® to clean if you generally wash your pit from top to bottom. However, to get the maximum life from your Pit Bull Safety Cover®, we recommend you follow the care and maintenance instructions below:

Light scrubbing of the webbing material is acceptable by using soft to medium brushes, air hosing, and shop vacuum cleaning to remove general gritty type dirt.

Professional Netting Concepts, L.L.C. suggest using a mild soap, such as Dawn Dishwashing Liquid or Woolite Laundry Detergent and hot water. Both of these products are a mild soap that will not harm your cover. With a medium stiff brush, apply the soap and water over the webbing of the Pit Bull®. Lightly scrub your webbing material. Always rinse thoroughly. A microfiber cloth is best to wipe dry, as it will not damage the webbing. Avoid using high pressure water equipment as this will degrade the webbing over time.

### **NO BLEACH, AMMONIA or CORROSIVE CHEMICALS**

To remove stubborn grease stains, first brush off loose dirt, then cover the stains with cornstarch or baby powder and leave overnight. After brushing off the cornstarch, most or all of the stain should disappear. Repeat the process if necessary.

For the No-Step Labels, lightly clean with microfiber, lukewarm, and mild soap such as Dawn or Woolite. Rinse thoroughly and air dry.

Always keep your Channel track clean of any debris. We recommend a dry graphite spray to coat the inside of the c-channel. You can also use WD-40 or light grease.

## Pit Bull Safety Cover® Inspection Log

The Pit Bull Safety Cover® Inspection Log takes under 30 minutes to complete. It is extremely important to inspect your entire system a minimum of every 3 months. As stated, if your vehicle count is high, Professional Netting Concepts, L.L.C. recommends monthly inspections to ensure your safety cover is functioning like it should.

Inspection Date: \_\_\_\_ / \_\_\_\_ / \_\_\_\_ Pit #: \_\_\_\_\_ Serial #: \_\_\_\_\_

Inspected By: \_\_\_\_\_ Location: \_\_\_\_\_  
 \_\_\_\_\_

Item Inspected	Condition (Good/Fair/Bad)	Remarks:
PIT BULL SAFETY COVER® WEBBING		
T-BOLTS		
SLIDING CHANNEL & WELDS		
ADAPTERS & A/P RODS		
ALL OTHER HARDWARE (detent pins, etc.)		
NO-STEP LABELS		
OTHER:		

### OVERALL CONDITION

	Yes	No	Explain: (If yes, please explain)
Is webbing (Pit Bull®) sagging?	<input type="checkbox"/>	<input type="checkbox"/>	_____
Does stitching look good?	<input type="checkbox"/>	<input type="checkbox"/>	_____
Are No-Step Labels attached & legible?	<input type="checkbox"/>	<input type="checkbox"/>	_____
Does Pit Bull® slide well on track?	<input type="checkbox"/>	<input type="checkbox"/>	_____
Any visible damage or concerns ?	<input type="checkbox"/>	<input type="checkbox"/>	_____

Notes/Comments:

**Need Additional Inspection Logs?**  
 Download at [www.pncnets.com](http://www.pncnets.com)

# Pit Bull Safety Cover® Inspection Log

Inspection Date: \_\_\_\_ / \_\_\_\_ / \_\_\_\_ Pit #: \_\_\_\_\_ Serial #: \_\_\_\_\_

Inspected By: \_\_\_\_\_ Location: \_\_\_\_\_  
 \_\_\_\_\_

Item Inspected	Condition (Good/Fair/Bad)	Remarks:
PIT BULL SAFETY COVER® WEBBING		
T-BOLTS		
SLIDING CHANNEL & WELDS		
ADAPTERS & A/P RODS		
ALL OTHER HARDWARE (detent pins, etc.)		
NO-STEP LABELS		
OTHER:		

## OVERALL CONDITION

Yes No

Explain: (If yes, please explain)

Is webbing (Pit Bull®) sagging?

<input type="checkbox"/>	<input type="checkbox"/>
<input type="checkbox"/>	<input type="checkbox"/>
<input type="checkbox"/>	<input type="checkbox"/>
<input type="checkbox"/>	<input type="checkbox"/>
<input type="checkbox"/>	<input type="checkbox"/>

Does stitching look good?

Are No-Step Labels attached & legible?

Does Pit Bull® slide well on track?

Any visible damage or concerns ?

---



---



---



---



---

Notes/Comments:

## Pit Bull Safety Cover® Inspection Log

Inspection Date: \_\_\_\_ / \_\_\_\_ / \_\_\_\_ Pit #: \_\_\_\_\_ Serial #: \_\_\_\_\_

Inspected By: \_\_\_\_\_ Location: \_\_\_\_\_  
 \_\_\_\_\_

Item Inspected	Condition (Good/Fair/Bad)	Remarks:
PIT BULL SAFETY COVER® WEBBING		
T-BOLTS		
SLIDING CHANNEL & WELDS		
ADAPTERS & A/P RODS		
ALL OTHER HARDWARE (detent pins, etc.)		
NO-STEP LABELS		
OTHER:		

### OVERALL CONDITION

Yes No

Explain: (If yes, please explain)

Is webbing (Pit Bull®) sagging?

<input type="checkbox"/>	<input type="checkbox"/>
<input type="checkbox"/>	<input type="checkbox"/>
<input type="checkbox"/>	<input type="checkbox"/>
<input type="checkbox"/>	<input type="checkbox"/>
<input type="checkbox"/>	<input type="checkbox"/>

Does stitching look good?

Are No-Step Labels attached & legible?

Does Pit Bull® slide well on track?

Any visible damage or concerns ?

---



---



---



---



---

Notes/Comments:



## Pit Bull Safety Cover® Inspection Log

Inspection Date: \_\_\_\_ / \_\_\_\_ / \_\_\_\_ Pit #: \_\_\_\_\_ Serial #: \_\_\_\_\_

Inspected By: \_\_\_\_\_ Location: \_\_\_\_\_  
 \_\_\_\_\_

Item Inspected	Condition (Good/Fair/Bad)	Remarks:
PIT BULL SAFETY COVER® WEBBING		
T-BOLTS		
SLIDING CHANNEL & WELDS		
ADAPTERS & A/P RODS		
ALL OTHER HARDWARE (detent pins, etc.)		
NO-STEP LABELS		
OTHER:		

### OVERALL CONDITION

Yes No

Explain: (If yes, please explain)

Is webbing (Pit Bull®) sagging?


Does stitching look good?

Are No-Step Labels attached & legible?

Does Pit Bull® slide well on track?

Any visible damage or concerns ?

---



---



---



---



---

Notes/Comments:

## Pit Bull Safety Cover® Inspection Log

Inspection Date: \_\_\_\_ / \_\_\_\_ / \_\_\_\_

Pit #: \_\_\_\_\_

Serial #: \_\_\_\_\_

Inspected By: \_\_\_\_\_

Location: \_\_\_\_\_

\_\_\_\_\_

Item Inspected	Condition (Good/Fair/Bad)	Remarks:
PIT BULL SAFETY COVER® WEBBING		
T-BOLTS		
SLIDING CHANNEL & WELDS		
ADAPTERS & A/P RODS		
ALL OTHER HARDWARE (detent pins, etc.)		
NO-STEP LABELS		
OTHER:		

### OVERALL CONDITION

Yes No

Explain: (If yes, please explain)

Is webbing (Pit Bull®) sagging?

<input type="checkbox"/>	<input type="checkbox"/>
<input type="checkbox"/>	<input type="checkbox"/>
<input type="checkbox"/>	<input type="checkbox"/>
<input type="checkbox"/>	<input type="checkbox"/>
<input type="checkbox"/>	<input type="checkbox"/>

Does stitching look good?

Are No-Step Labels attached & legible?

Does Pit Bull® slide well on track?

Any visible damage or concerns ?

---



---



---



---



---

Notes/Comments:

## Pit Bull Safety Cover® Inspection Log

Inspection Date: \_\_\_\_ / \_\_\_\_ / \_\_\_\_

Pit #: \_\_\_\_\_

Serial #: \_\_\_\_\_

Inspected By: \_\_\_\_\_

Location: \_\_\_\_\_

\_\_\_\_\_

Item Inspected	Condition (Good/Fair/Bad)	Remarks:
PIT BULL SAFETY COVER® WEBBING		
T-BOLTS		
SLIDING CHANNEL & WELDS		
ADAPTERS & A/P RODS		
ALL OTHER HARDWARE (detent pins, etc.)		
NO-STEP LABELS		
OTHER:		

### OVERALL CONDITION

Yes No

Explain: (If yes, please explain)

Is webbing (Pit Bull®) sagging?

<input type="checkbox"/>	<input type="checkbox"/>
<input type="checkbox"/>	<input type="checkbox"/>
<input type="checkbox"/>	<input type="checkbox"/>
<input type="checkbox"/>	<input type="checkbox"/>
<input type="checkbox"/>	<input type="checkbox"/>

Does stitching look good?

Are No-Step Labels attached & legible?

Does Pit Bull® slide well on track?

Any visible damage or concerns ?

---



---



---



---



---

Notes/Comments:

## Pit Bull Safety Cover® Inspection Log

Inspection Date:      /      /     

Pit #: \_\_\_\_\_

Serial #: \_\_\_\_\_

Inspected By: \_\_\_\_\_

Location: \_\_\_\_\_

Item Inspected	Condition (Good/Fair/Bad)	Remarks:
PIT BULL SAFETY COVER® WEBBING		
T-BOLTS		
SLIDING CHANNEL & WELDS		
ADAPTERS & A/P RODS		
ALL OTHER HARDWARE (detent pins, etc.)		
NO-STEP LABELS		
OTHER:		

## OVERALL CONDITION

Yes      No

Explain: (If yes, please explain)

## Is webbing (Pit Bull®) sagging?


## Does stitching look good?

Are No-Step Labels attached & legible?

## Does Pit Bull® slide well on track?

Any visible damage or concerns ?

Notes/Comments:

**Need Additional Inspection Logs?**  
Download at [www.pncnets.com](http://www.pncnets.com)

## Frequently Asked Questions

1. **My Pit Bull Safety Cover® will not slide?** Your Pit Bull Safety Cover® should glide from one end of the pit to the other. If your Pit Bull Safety Cover® is not gliding freely, check and make sure there is no debris inside the c-channel. Always make sure your channel and T-bolts are greased, Professional Netting Concepts, L.L.C. recommends using a spray graphite, which can be purchased at a local hardware store. Make sure T-Bolts are properly adjusted
2. **My Pit Bull Safety Cover® gets stuck in certain areas of the c-channel track?** Examine the c-channel at the location where your cover is jamming to identify the cause. Make sure no debris is preventing your cover gliding back and forth.
  - » **Is the Pit Bull Safety Cover® stopping where two pieces of channel meet?** If so, inspect both channels to ensure they meet flush or if they require filing to smooth the transition.
  - » *If you are still having problems, please contact Professional Netting Concepts at your earliest convenience. Call 832-515-8385 or email [sales@pncnets.com](mailto:sales@pncnets.com)*
3. **My Pit Bull Safety Cover® is sagging?** Your Pit Bull Safety Cover® can be adjusted to help with sagging. We recommend purchasing our T-bolt Adjuster to ensure the adjustment is the same from front to back of the entire pit area.
4. **I need to order replacement parts for my Pit Bull Safety Cover®?** You may visit our website [www.pncnets.com](http://www.pncnets.com) to order any parts needed. You can also send an email to [sales@pncnets.com](mailto:sales@pncnets.com) or call us at 832-515-8385
5. **A vehicle drove on to my Pit Bull Safety Cover®. What do I do?** Please send pictures of any damage through email at [sales@pncnets.com](mailto:sales@pncnets.com) or call 832-515-8385. Professional Netting Concepts, L.L.C. recommends the pit area where the incident happened to be closed to all traffic and stop using until it is determined the Pit Cover is stable.
  - » **WARNING:** all incidents involving the Pit Bull Safety Cover® are considered a malfunction and should be reported to Professional Netting Concepts, L.L.C. immediately. Failure to comply during a malfunction of your Pit Bull Safety Cover® could damage the product further and cause serious injury to the user.
6. **What is the number sewn onto my Pit Bull Safety Cover®?** The number sewn onto the webbing is your product serial number.
7. **How do I remove the pins and replace my No-step Labels?** Professional Netting Concepts, L.L.C. recommends purchasing our magnetic remover to remove and replace the No-step labels.
8. **Is it okay to walk on the Pit Bull Safety Cover®?** Professional Netting Concepts, L.L.C. recommends to NOT walk on, crossover, or stand on the Pit Bull Safety Cover®.
9. **How long should my Pit Bull Safety Cover® last?** Your Pit Bull Safety Cover® should last 10+ years with proper care and maintenance.

## Contact Us

# Business Hours

**Monday - Friday**  
9am -5pm CT

832-515-8385  
[sales@pncnets.com](mailto:sales@pncnets.com)  
[www.pncnets.com](http://www.pncnets.com)

---

SCAN ME



# **Warranty Terms & Conditions**

Pit Bull Safety Cover®

## **WEBBING – One (1) Year Limited Warranty**

The manufacturer warrants this product to be free from defects in workmanship under normal use and conditions for (1) Year from the original invoice date (excluding shipping and handling charges). This warranty only covers failures due to defects in the polyester material. The warranty does not cover failures due to damage in shipment, or failures which are caused by products not supplied by Professional Netting Concepts, L.L.C. or failures which result from an accident, vehicular traffic, misuse, abuse, neglect, mishandling, misapplication, alteration, faulty installation (by others not directly employed by Professional Netting Concepts, L.L.C. and any modification. Warranty does not cover damage caused by fire, floods, hurricanes, cyclones, tornados, earthquakes or any other extraordinary or unusual event. In no event shall Professional Netting Concepts, L.L.C. be liable for any consequential damages or for damages to the building, its contents or injury to its occupants. No liability for damages will be attributed to Professional Netting Concepts, L.L.C. resulting from unsuitable or improper use. Should defects be found during the required warranty, the customer shall bear the burden of proof to show that the defects were caused as a result of use during the designated warranty period. The Customer guarantees that he/she fully complied with the use, maintenance and care of the webbing being warranted. Such replacement is subject to verification of the defect and proof.

## **PARTS/HARDWARE – One (1) Year Limited Warranty**

The manufacturer warrants this product to be free from defects in workmanship under normal use and conditions for (1) Year from the original invoice date (excluding shipping and handling charges). New parts in exchange for the defective parts for one (1) year after original purchase. The warranty only covers failures due to defective hardware which occurs during normal use. The warranty does not cover failures due to damage in shipment, or failures which are caused by products not supplied by Professional Netting Concepts, L.L.C. or failures which result from an accident, vehicular traffic, misuse, abuse, neglect, mishandling, misapplication, alteration, faulty installation (by others not directly employed by Professional Netting Concepts, L.L.C. and any modification. Warranty does not cover damage caused by fire, floods, hurricanes, cyclones, tornados, earthquakes, theft or any other extraordinary or unusual event. In no event shall Professional Netting Concepts, L.L.C. be liable for any consequential damages or for damages to the building, its contents or injury to its occupants. No liability for damages will be attributed to Professional Netting Concepts, L.L.C. resulting from unsuitable or improper use. Should defects be found during the required warranty, the customer shall bear the burden of proof to show that the defects were caused because of use during the designated warranty period. The Customer guarantees that he/she fully complied with the use, maintenance and care of the webbing being warranted. Such replacement is subject to verification of the defect and proof of purchase.

## **PARTS NOT INCLUDED IN WARRANTY**

- 10" Bolt Adapters ARE NOT included in any kind of warranty from Professional Netting Concepts, L.L.C.
- No-Step Labels ARE NOT included in any kind of warranty from Professional Netting Concepts, L.L.C.

## MANUFACTURER INSTALLATION

Manufacturer installations include (1) year warranty from date of installation. The manufacturer installation warranty includes only the installation of the Pit Bull Safety Cover®. The warranty shall include the labor for a period of one (1) year from installation. Defects in the installation that occur which affect the performance of the Pit Bull Safety Cover® and notified to us within this warranty period will be rectified at our discretion. Any person, not directly employed by Professional Netting Concepts, L.L.C. performing installations of the Pit Bull Safety Cover® **WILL NOT** be covered by the warranty, unless the person has been designated a “**Certified Installer**” by Professional Netting Concepts, L.L.C.

What is NOT COVERED:

1. Any installation defect that was apparent or ascertained at the time the work was completed but was not promptly reported.
2. Damage resulting from fires, storms, accidents, floods, hurricanes, cyclones, tornados, earthquakes, or any acts of God.
3. Damage related to customers failure to observe the maintenance and care of the product

All warranties are extended only to the original purchaser. The warranties shall be void if Professional Netting Concepts, L.L.C. fails to receive full payment. These warranties give you specific legal rights and you may also have rights which vary from state to state.

See a list of certified installers on our website [www.pncnets.com](http://www.pncnets.com)



Copyright © 2023  
Professional Netting Concepts, L.L.C.  
All rights reserved.

# COVERING ASSETS SINCE 1993



[www.pncnets.com](http://www.pncnets.com) | [832-515-8385](tel:832-515-8385) | [sales@pncnets.com](mailto:sales@pncnets.com) | [@pncnets](https://www.instagram.com/pncnets)